

The Soho Life


COMES TO BENGALURU



Images are indicative. For representation only.

VILLA-STYLE SKYRISE RESIDENCES

In association with
BV BADAM
VENTURES Realty



Nambiar
DISTRICT 25
OFF SARJAPUR ROAD



An Elevated Experience





Artistic Impression.



Artistic Impression.



Artistic Impression.



Artistic Impression.



AMENITIES

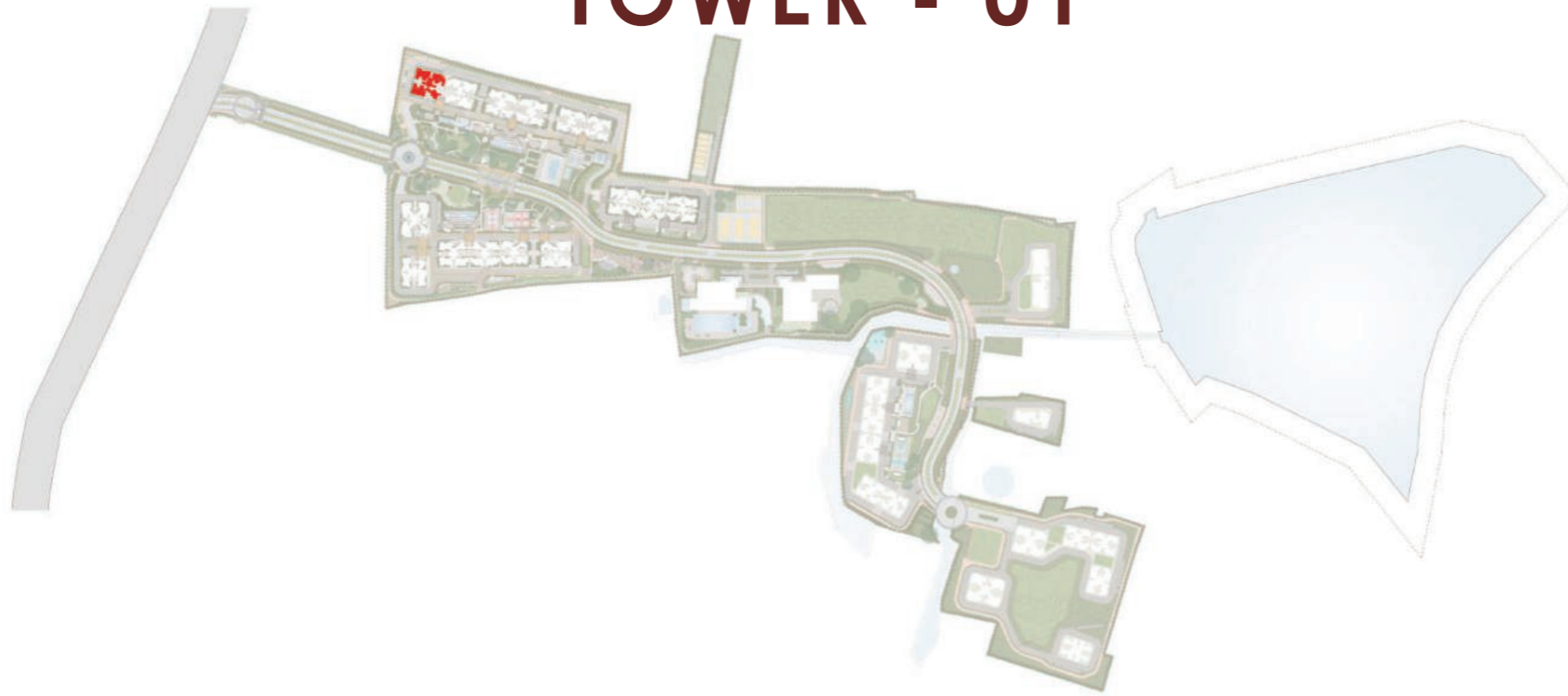
- | | | |
|--|--|-----------------------------|
| 1. Carriage Way | 17. Slow Drive Zone -(Phase 1A,1B) | 33. Basketball |
| 2. Cycle Lane on Carriage Way | 18. Open Pavilions with Roof Deck | 34. Tennis Court |
| 3. Raised Pedestrian Crossing | 19. Maidan with Large Trees | 35. Padel Court |
| 4. Roundabout | 20. Santhe Street along Bus Waiting Area | 36. Skating |
| 5. Treeline | 21. Senior's Hall | 37. Cricket Practice Pitch |
| 6. Feature Walls | 22. Hobby Centre | 38. Seating Arena |
| 7. Cycling Lane | 23. Amphitheatre | 39. Indoor Badminton Courts |
| 8. Jogging Lane | 24. Plaza | 40. Orchard around Pavilion |
| 9. Shared Lane | 25. Multipurpose Pavilion | 41. Medicinal Plant Beds |
| 10. Treeline with Benches | 26. Swimming Pool | 42. Oval Glade |
| 11. Podium Driveway | 27. Kids' Pool | 43. Butterfly Garden |
| 12. Podium Drop-Off | 28. Poolside Deck | 44. Bamboo Groves |
| 13. Parking on Podium | 29. Mini Golf | 45. Tree Courts |
| 14. Cycle Stand | 30. Adults swing & Activity | 46. Pocket Park |
| 15. Raised Bus Halt Zone | 31. Pickleball | 47. Pet Pocket Park |
| 16. Waiting Area - Semi-covered in Boulevard | 32. Volleyball | 48. Shuttle / Frisbee court |
| | | 49. Tot Lot |
| | | 50. Reflexology |
| | | 51. Yoga Deck |
| | | 52. Trampoline |
| | | 53. Play Zone |
| | | 54. Maze |
| | | 55. Swing Plaza |
| | | 56. Exercise Garden |
| | | 57. Laughter Club |
| | | 58. Barbeque |
| | | 59. Drop Off zone |
| | | 60. Banquet |
| | | 61. Lily Pond |



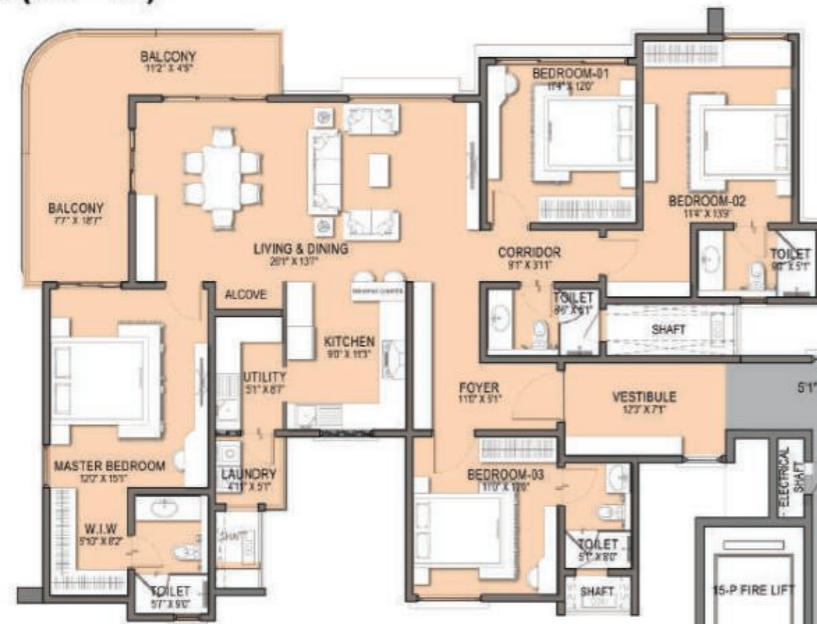


An Envidable Address

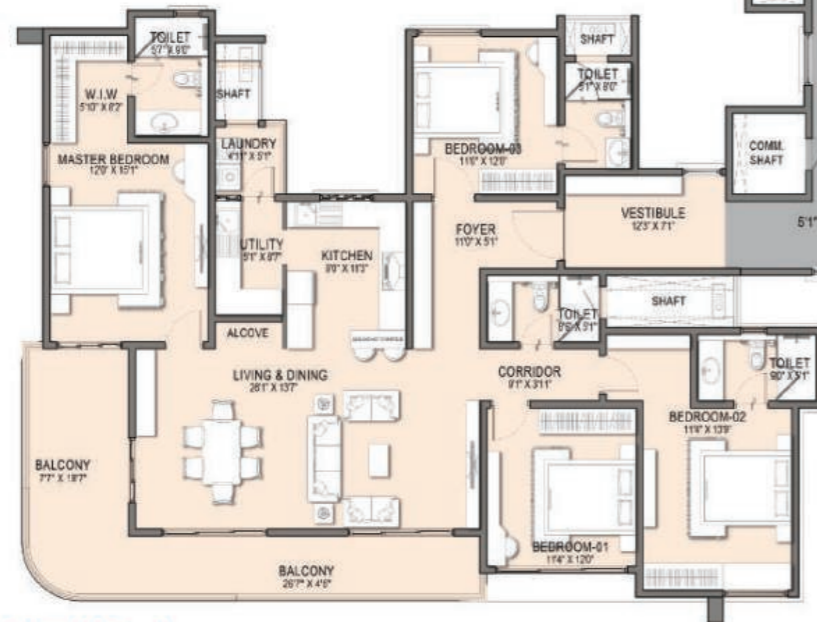
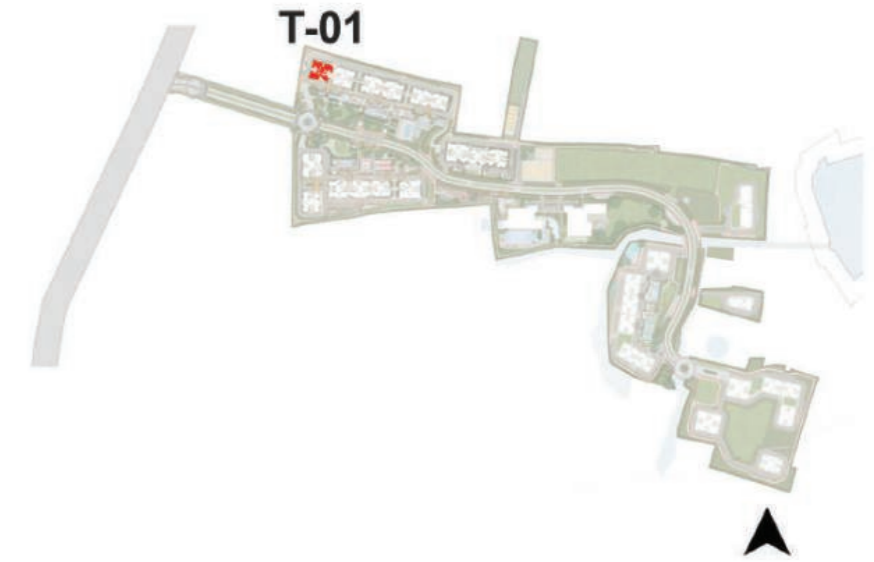
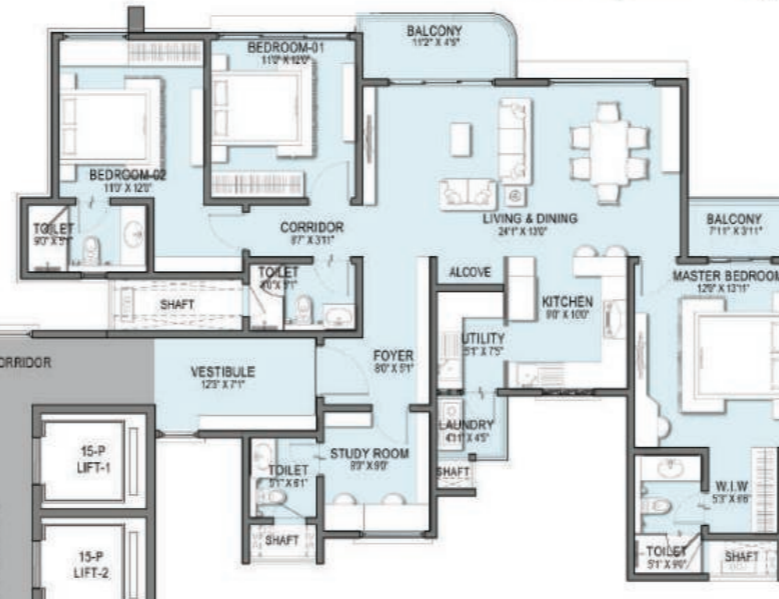
TOWER - 01



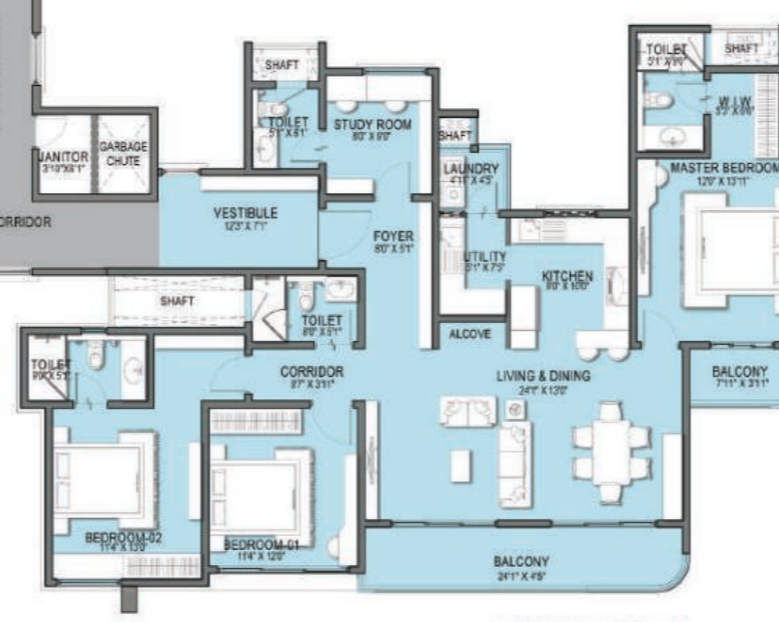
**UNIT NO-2
TYPE-2(4B - 4T)**



**UNIT NO-3
TYPE-5(3.5B - 4T)**



**UNIT NO-1
TYPE-1(4B - 4T)**



**UNIT NO-4
TYPE-6(3.5B - 4T)**

TOWER-1 (SQ.FT.)				
UNIT TYPE	TYPE	UNIT NO	SALE AREA	CARPET AREA
	TYPOLOGY			
1	4B - 4T	1	2583	1605
2	4B - 4T	2	2489	1605
5	3.5B - 4T	3	2080	1386
6	3.5B - 4T	4	2185	1406

**TYPICAL FLOOR PLAN
PHASE 1 TOWER - 01**





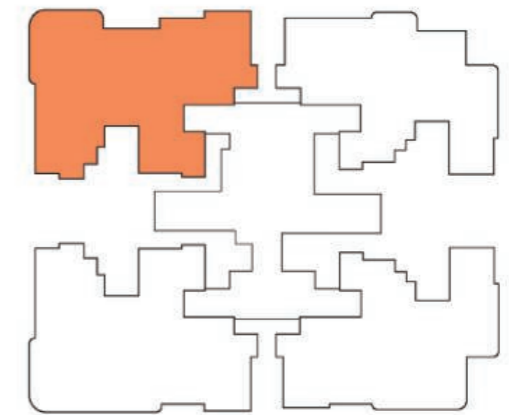
CLUSTER PLAN
TOWER - 01



KEYPLAN
PART MASTER PLAN

4 BED 4T UNIT
UNIT - 1

SALE AREA = 2583 sqft
CARPET AREA = 1605 sqft



CLUSTER PLAN
TOWER - 01

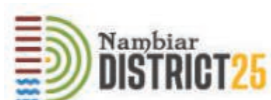


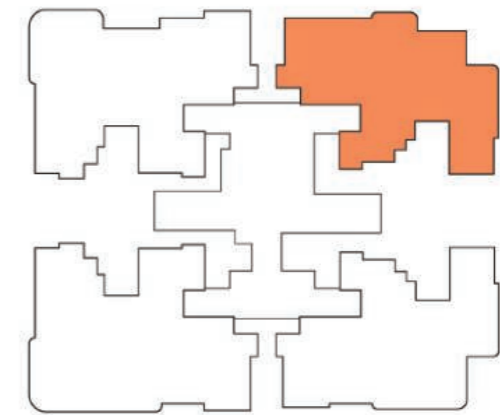
KEYPLAN
PART MASTER PLAN

**4 BED 4T UNIT
UNIT - 2**

SALE AREA = 2489 sqft
CARPET AREA = 1605 sqft

**4 BED 4T - UNIT TYPE-2
PHASE 1 TOWER - 01**





CLUSTER PLAN
TOWER - 01

T-01

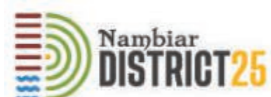


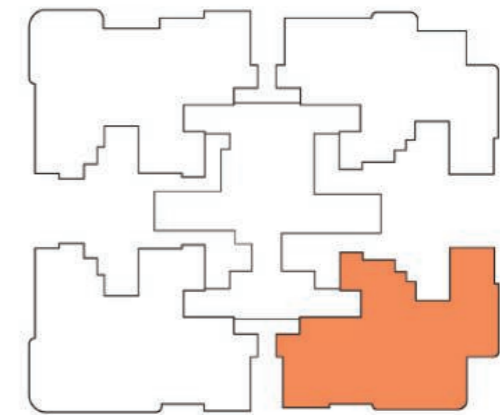
KEYPLAN
PART MASTER PLAN

3.5 BED 4T UNIT
UNIT - 3

SALE AREA = 2080 sqft
CARPET AREA = 1386 sqft

3.5 BED 4T - UNIT TYPE-5
PHASE 1 TOWER - 01





**CLUSTER PLAN
TOWER - 01**

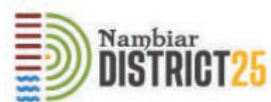


**KEYPLAN
PART MASTER PLAN**

**3.5 BED 4T UNIT
UNIT - 4**

SALE AREA = 2185 sqft
 CARPET AREA = 1406 sqft

**3.5 BED 4T - UNIT TYPE-6
 PHASE 1 TOWER - 01**

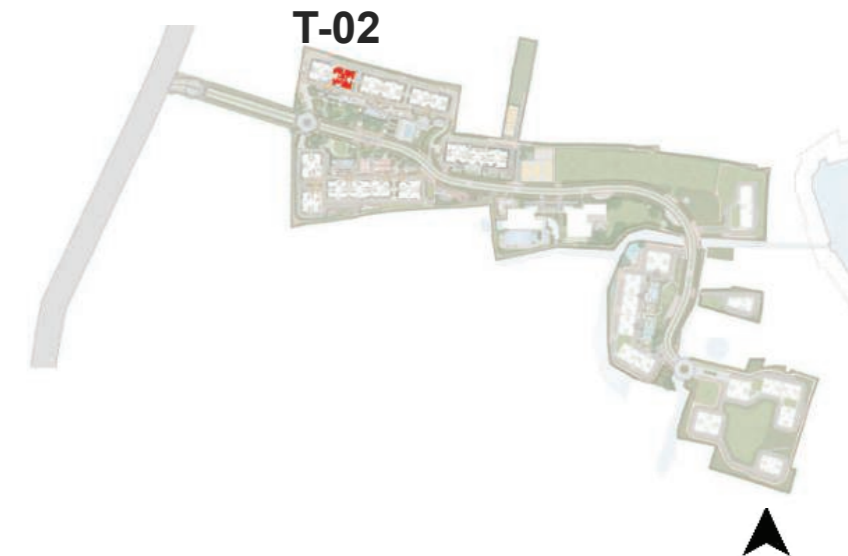
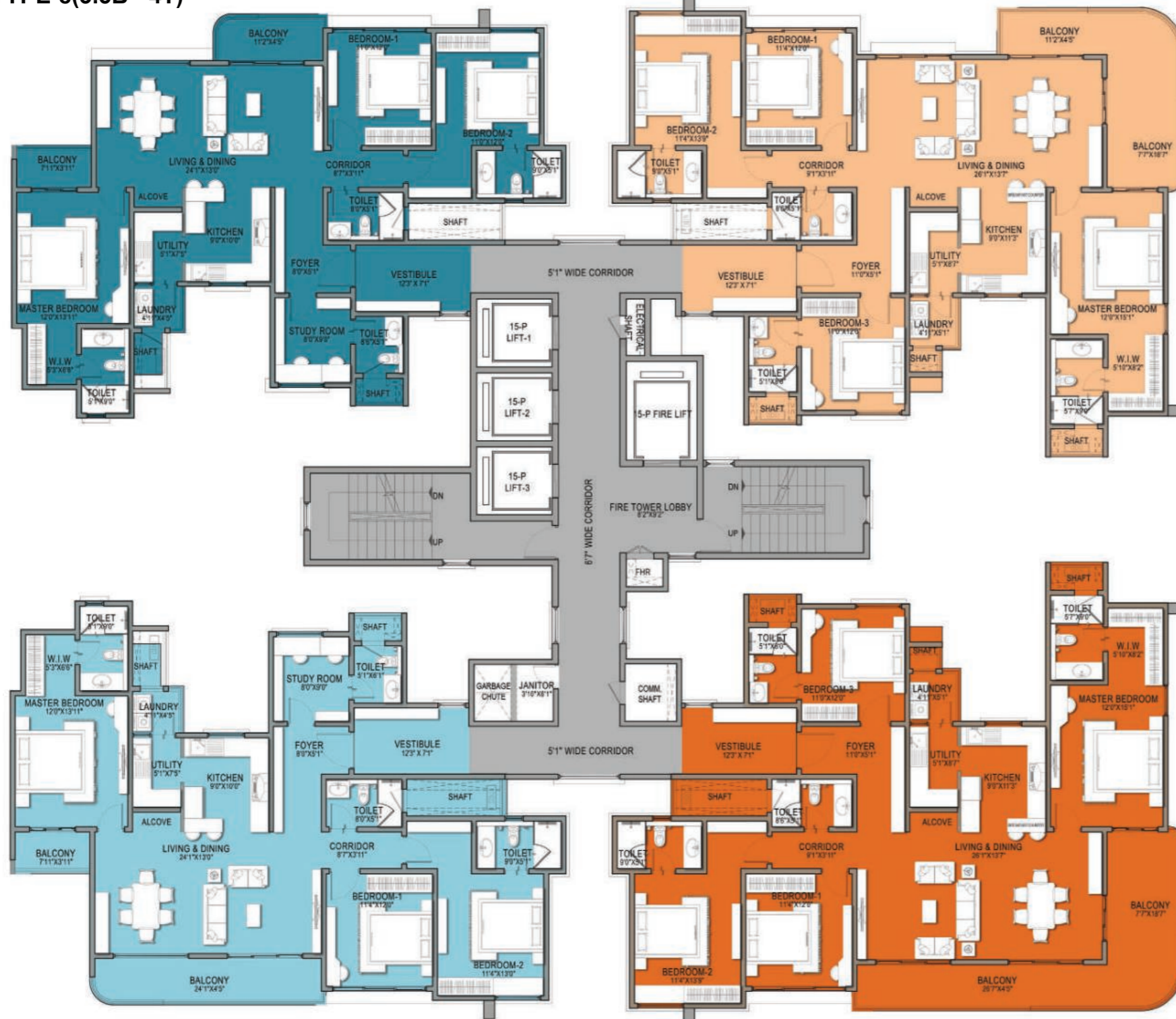


TOWER - 02



UNIT NO-2
TYPE-8(3.5B - 4T)

UNIT NO-3
TYPE-3(4B - 4T)



UNIT NO-1
TYPE-7(3.5B - 4T)

UNIT NO-4
TYPE-4(4B - 4T)

TOWER-2 (SQ.FT.)				
TYPE		UNIT NO	SALE AREA	CARPET AREA
UNIT TYPE	TYPOLOGY			
7	3.5B - 4T	1	2181	1406
8	3.5B - 4T	2	2076	1386
3	4B - 4T	3	2497	1605
4	4B - 4T	4	2590	1605

TYPICAL FLOOR PLAN
PHASE 1 TOWER - 02



CLUSTER PLAN
TOWER - 02

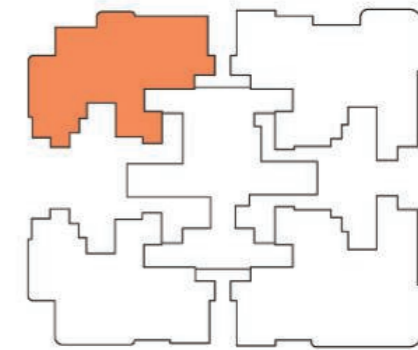


KEYPLAN
PART MASTER PLAN

**3.5 BED 4T UNIT
UNIT - 1**

SALE AREA = 2181 sqft
CARPET AREA = 1406 sqft

**3.5 BED 4T - UNIT TYPE-7
PHASE 1 TOWER - 02**



CLUSTER PLAN
TOWER - 02

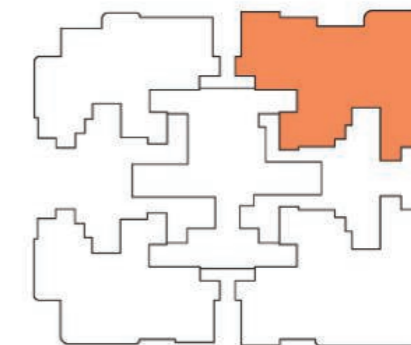


KEYPLAN
PART MASTER PLAN

**3.5 BED 4T UNIT
UNIT - 2**

SALE AREA = 2076 sqft
CARPET AREA = 1386 sqft

**3.5 BED 4T - UNIT TYPE-8
PHASE 1 TOWER - 02**



CLUSTER PLAN
TOWER - 02

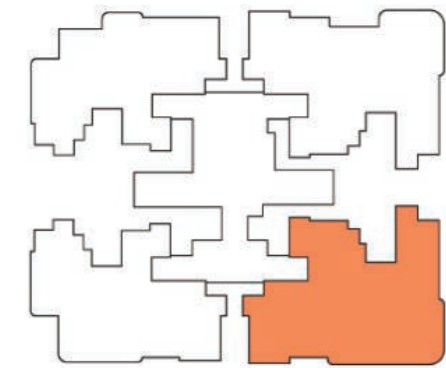


KEYPLAN
PART MASTER PLAN

**4 BED 4T UNIT
UNIT - 3**

SALE AREA = 2497 sqft
CARPET AREA = 1605 sqft

**4 BED 4T - UNIT TYPE- 3
PHASE 1 TOWER - 02**



CLUSTER PLAN
TOWER - 02



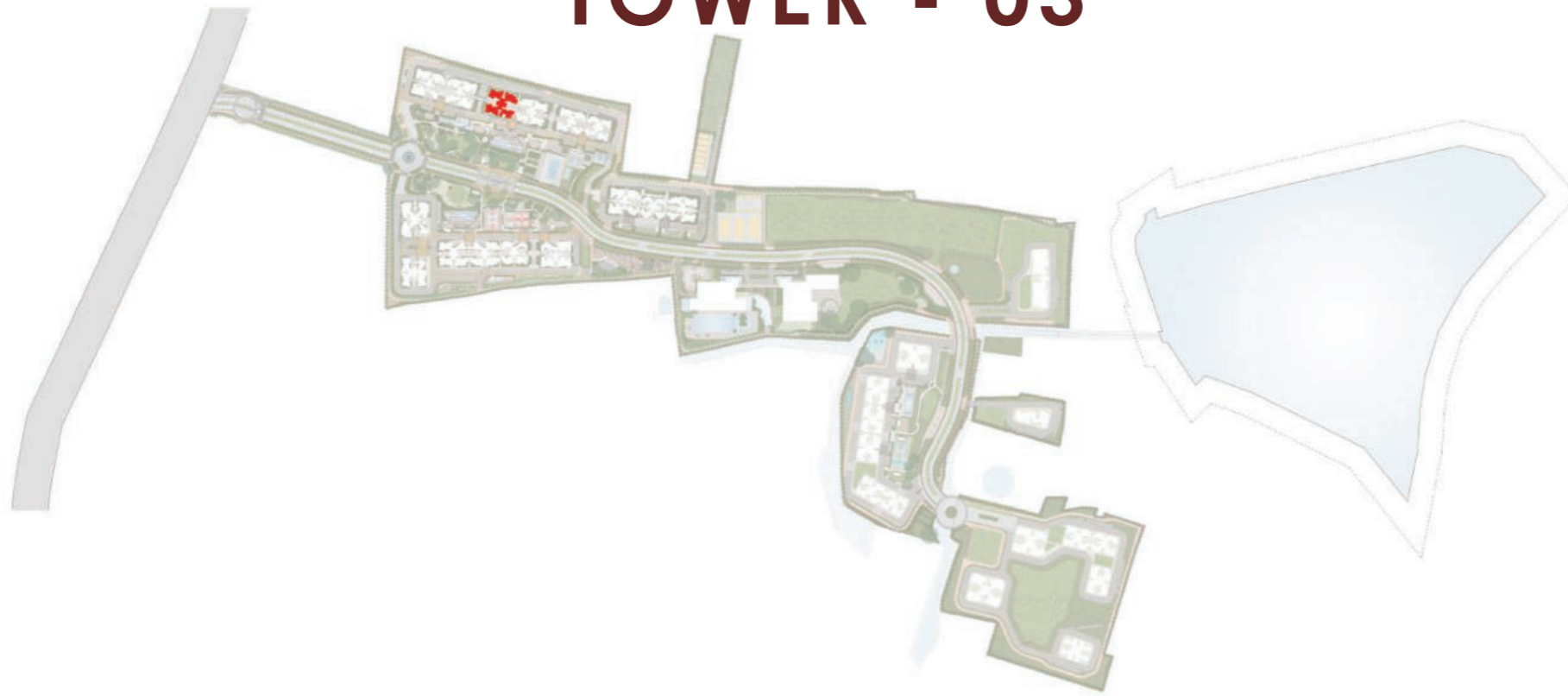
KEYPLAN
PART MASTER PLAN

4 BED 4T UNIT
UNIT - 4

SALE AREA = 2590 sqft
CARPET AREA = 1605 sqft

4 BED 4T - UNIT TYPE-4
PHASE 1 TOWER - 02

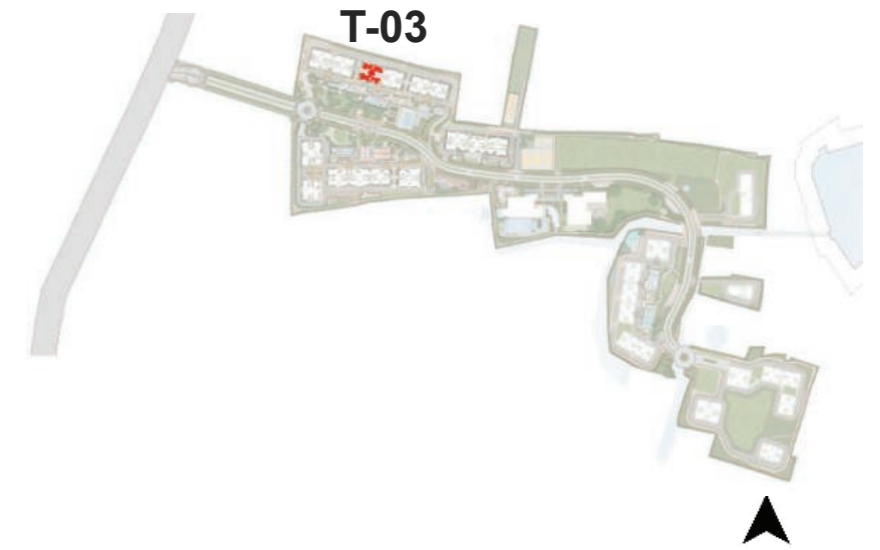
TOWER - 03



UNIT NO-2
TYPE-10(3B - 3T)



UNIT NO-3
TYPE-11(3B - 3T)

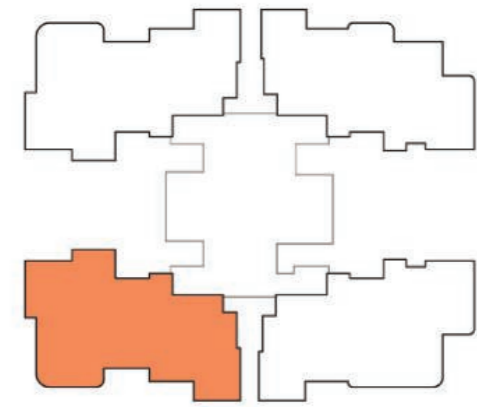


UNIT NO-1
TYPE-9(3B - 3T)

UNIT NO-4
TYPE-12(3B - 3T)

TOWER-3 (SQ.FT.)					
UNIT TYPE	TYPE		UNIT NO	SALE AREA	CARPET AREA
	TYPOLOGY				
9	3B - 3T		1	2000	1307
10	3B - 3T		2	2000	1307
11	3B - 3T		3	1845	1250
12	3B - 3T		4	1936	1260

TYPICAL FLOOR PLAN
PHASE 1 TOWER - 03



CLUSTER PLAN
TOWER - 03

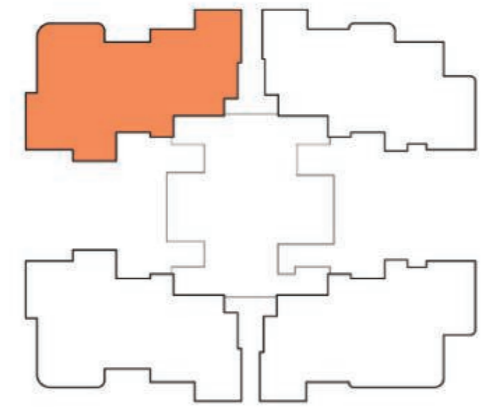


KEYPLAN
PART MASTER PLAN

3 BED 3T UNIT
UNIT - 1

SALE AREA = 2000 sqft
CARPET AREA = 1307 sqft

3 BED 3T - UNIT TYPE-9
PHASE 1 TOWER - 03



CLUSTER PLAN
TOWER - 03

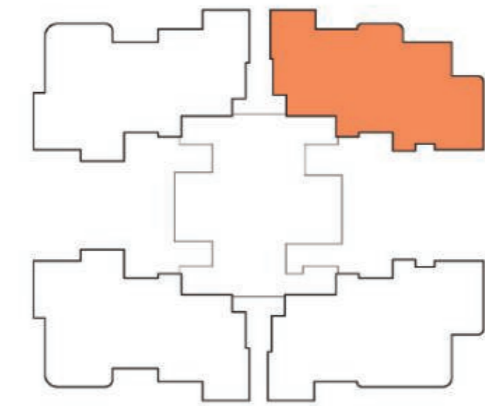


KEYPLAN
PART MASTER PLAN

**3 BED 3T UNIT
UNIT - 2**

SALE AREA = 2000 sqft
CARPET AREA = 1307 sqft

**3 BED 3T - UNIT TYPE-10
PHASE 1 TOWER - 03**



CLUSTER PLAN
TOWER - 03

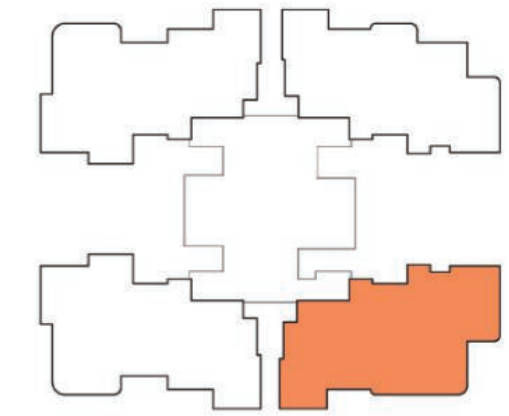


KEYPLAN
PART MASTER PLAN

3 BED 3T UNIT
UNIT - 3

SALE AREA = 1845 sqft
CARPET AREA = 1250 sqft

3 BED 3T - UNIT TYPE-11
PHASE 1 TOWER - 03



CLUSTER PLAN
TOWER - 03



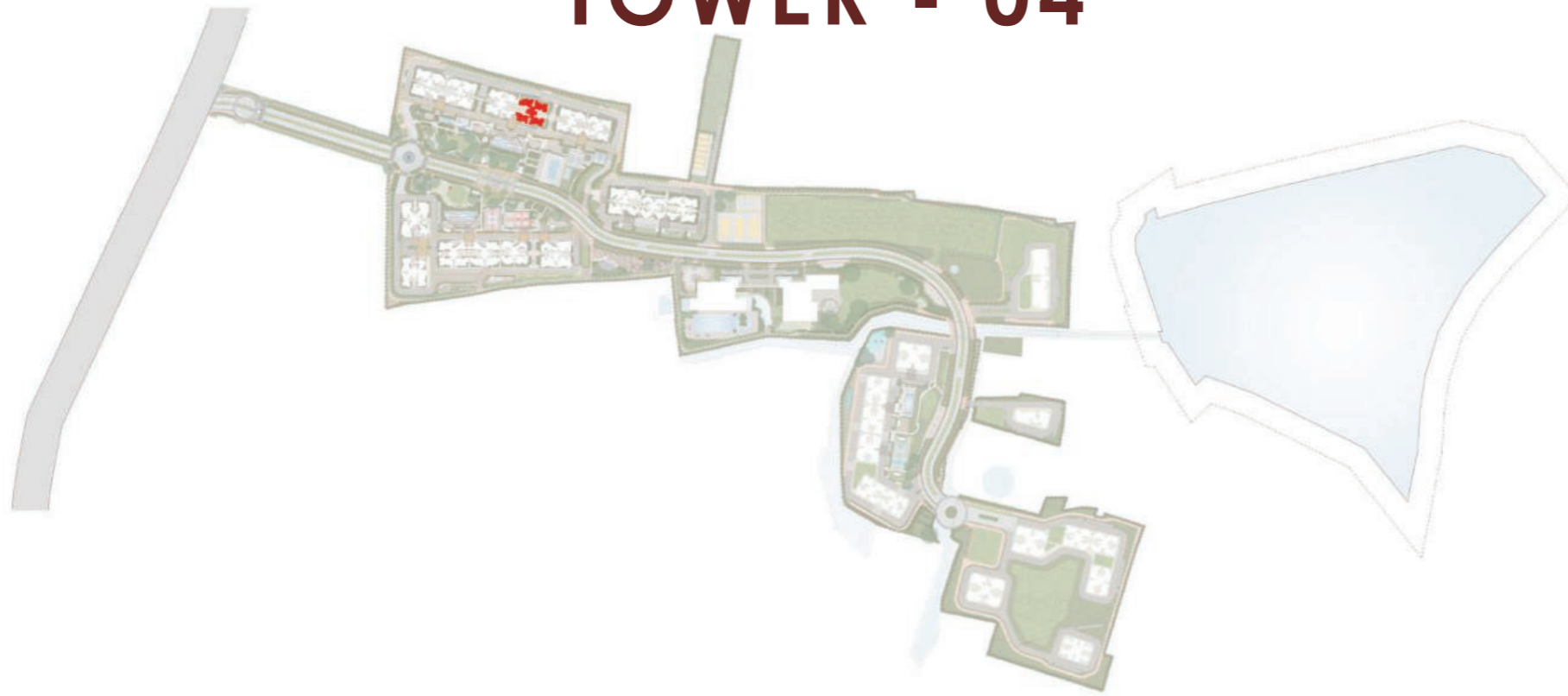
KEYPLAN
PART MASTER PLAN

3 BED 3T UNIT
UNIT - 4

SALE AREA = 1936 sqft
CARPET AREA = 1260 sqft

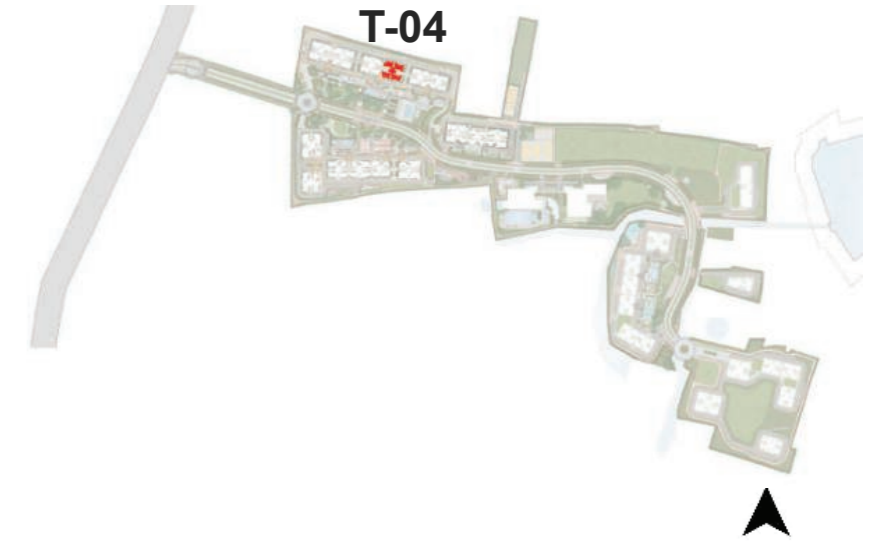
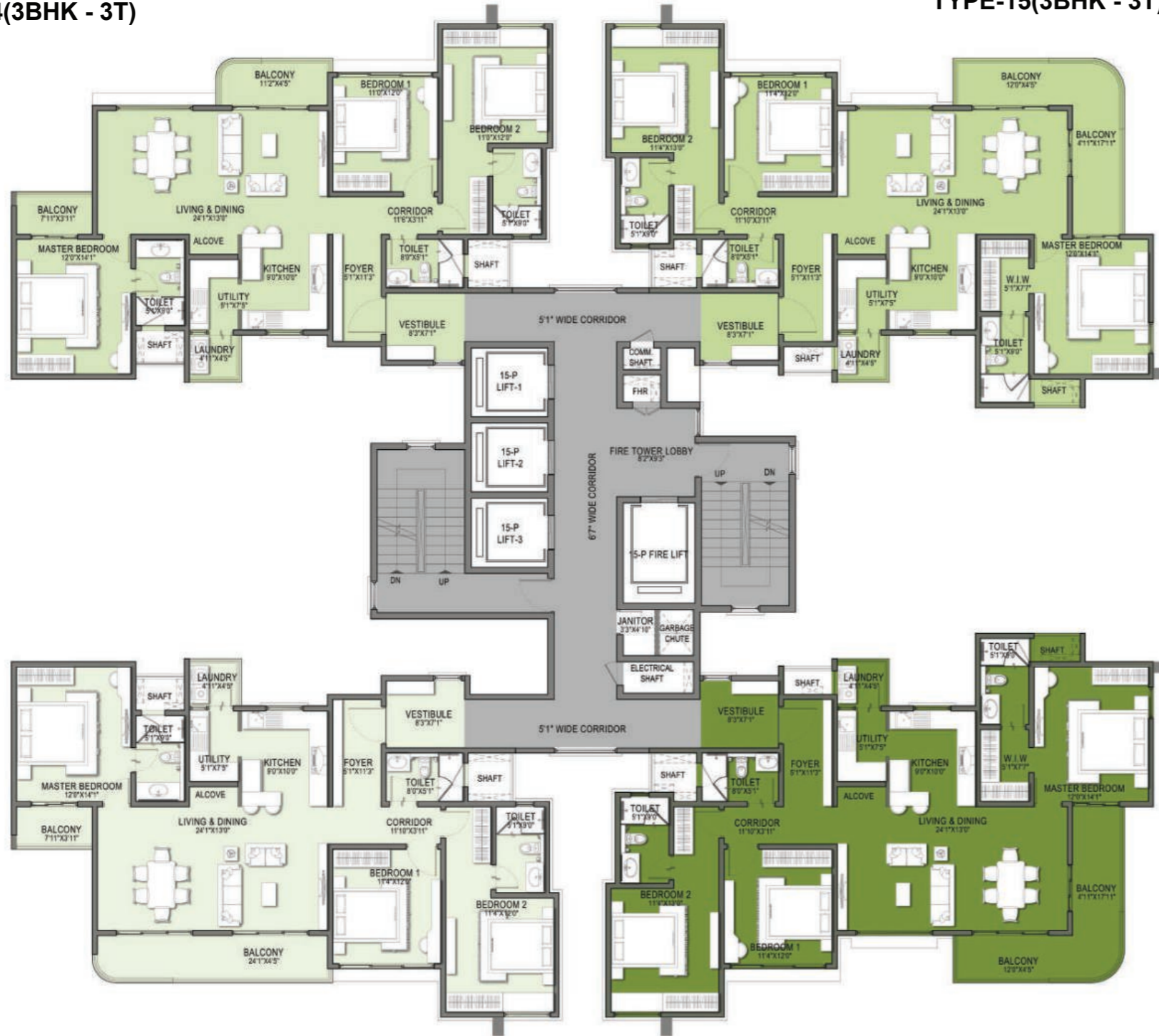
3 BED 3T - UNIT TYPE-12
PHASE 1 TOWER - 03

TOWER - 04



UNIT NO-2
TYPE-14(3BHK - 3T)

UNIT NO-3
TYPE-15(3BHK - 3T)

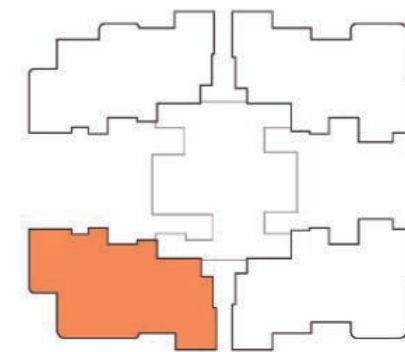


UNIT NO-1
TYPE-13(3BHK - 3T)

UNIT NO-4
TYPE-16(3BHK - 3T)

TOWER-4 (SQ.FT.)					
UNIT TYPE	TYPE		UNIT NO	SALE AREA	CARPET AREA
	TYPOLOGY				
13	3 B - 3 T		1	1936	1260
14	3 B - 3 T		2	1845	1250
15	3 B - 3 T		3	2007	1310
16	3 B - 3 T		4	2007	1310

TYPICAL FLOOR PLAN
PHASE 1 TOWER - 04



CLUSTER PLAN
TOWER - 04

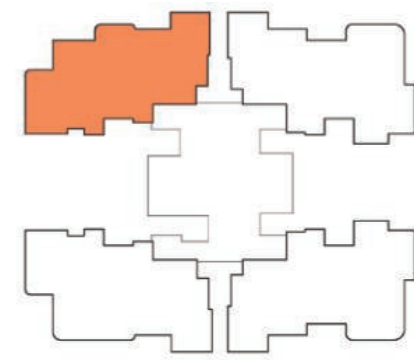


KEYPLAN
PART MASTER PLAN

**3 BED 3T UNIT
UNIT - 1**

SALE AREA = 1936 sqft
CARPET AREA = 1260 sqft

**3 BED 3T - UNIT TYPE-13
PHASE 1 TOWER - 04**



CLUSTER PLAN
TOWER - 04



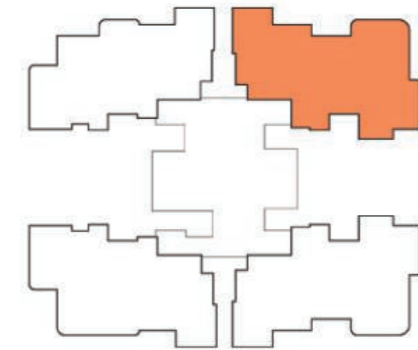
KEYPLAN
PART MASTER PLAN



3 BED 3T UNIT
UNIT - 2

SALE AREA = 1845 sqft
CARPET AREA = 1250 sqft

3 BED 3T - UNIT TYPE-14
PHASE 1 TOWER - 04



CLUSTER PLAN
TOWER - 04

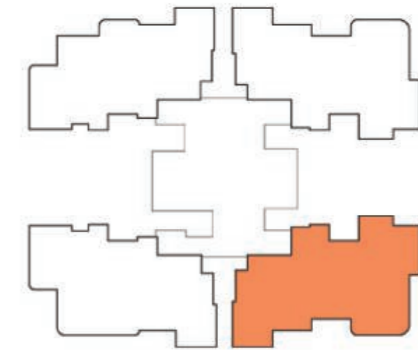


KEYPLAN
PART MASTER PLAN

3 BED 3T UNIT
UNIT - 3

SALE AREA = 2007 sqft
CARPET AREA = 1310 sqft

3 BED 3T - UNIT TYPE-15
PHASE 1 TOWER - 04



CLUSTER PLAN
TOWER - 04



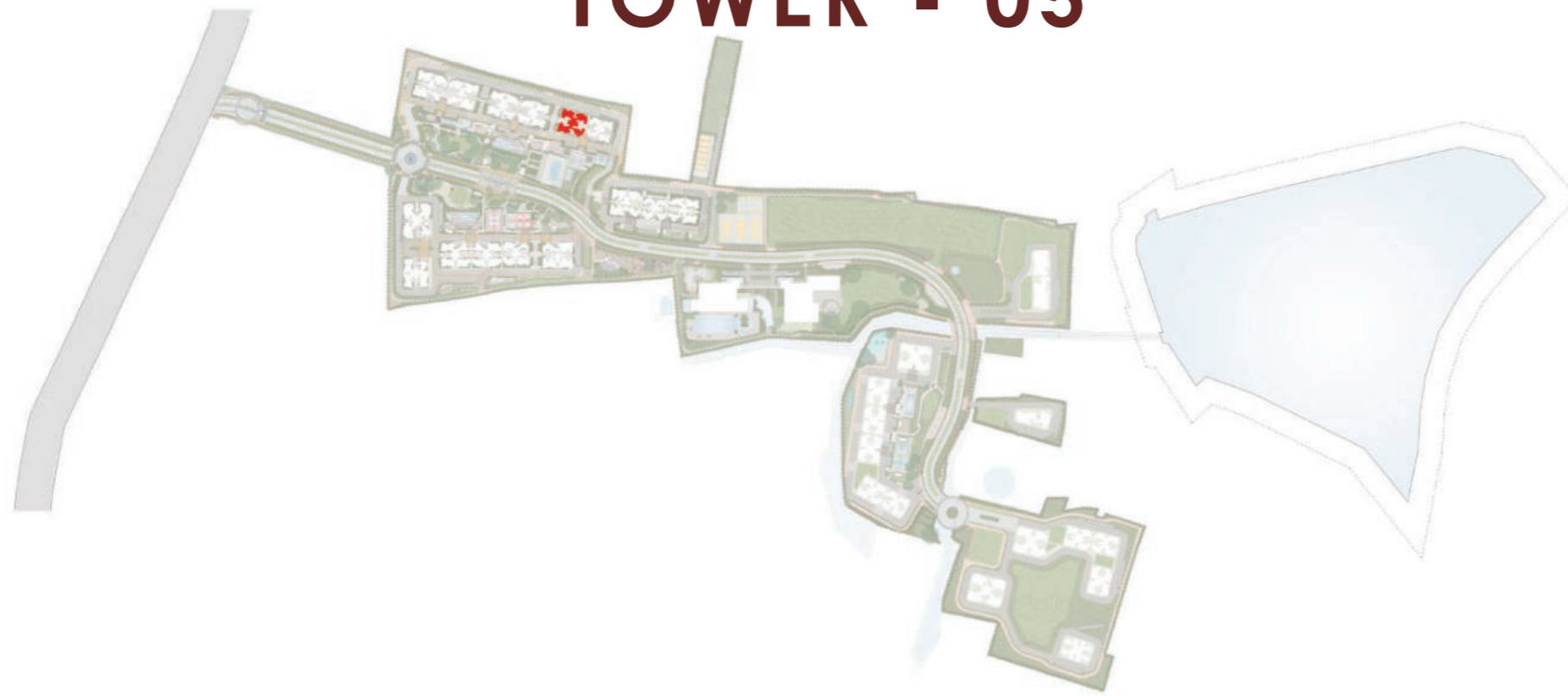
KEYPLAN
PART MASTER PLAN

3 BED 3T UNIT
UNIT - 4

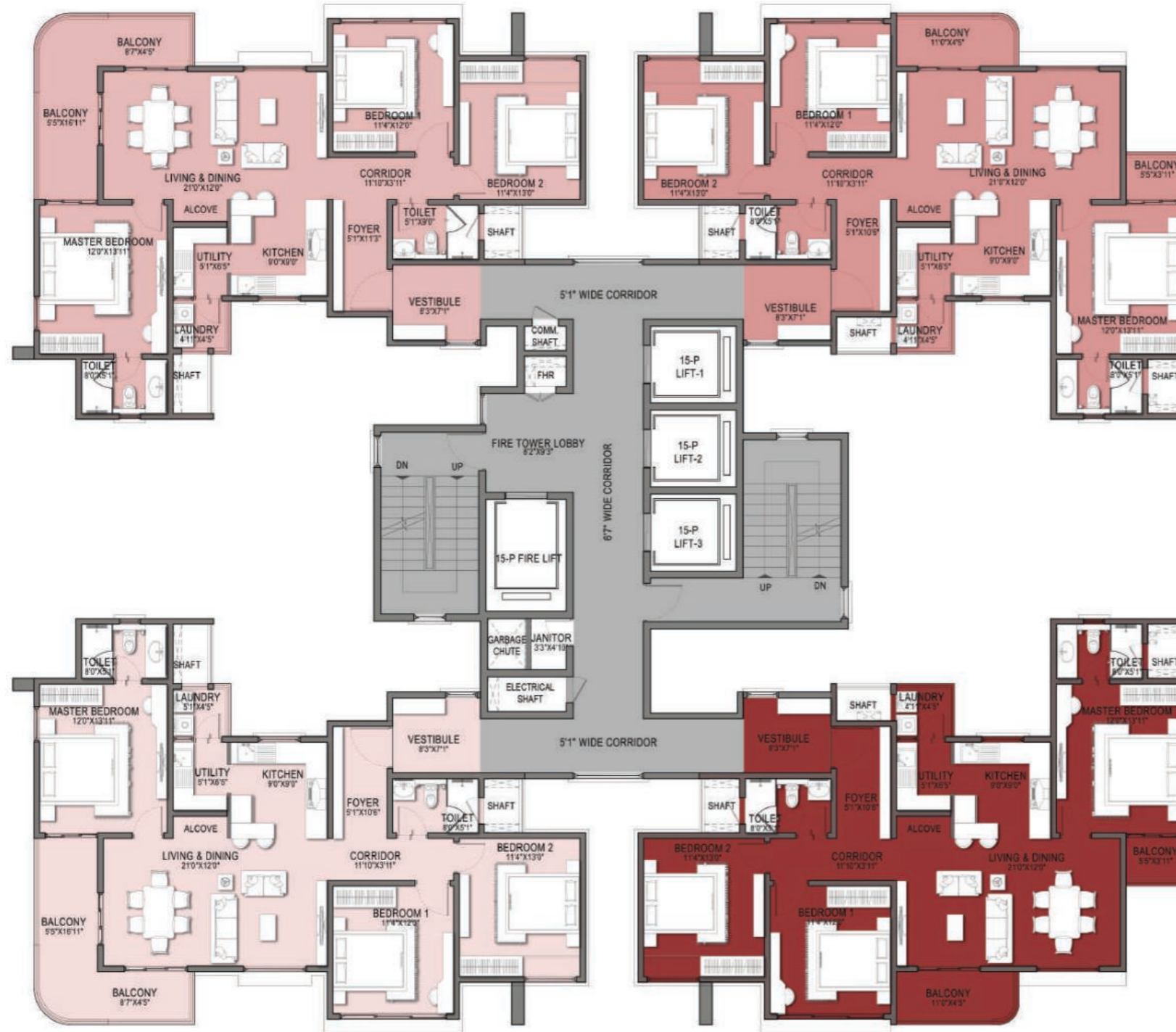
SALE AREA = 2007 sqft
CARPET AREA = 1310 sqft

3 BED 3T - UNIT TYPE-16
PHASE 1 TOWER - 04

TOWER - 05



UNIT NO-2
TYPE-18(3B - 2T)



UNIT NO-3
TYPE-19(3B - 2T)

UNIT NO-1
TYPE-17(3B - 2T)

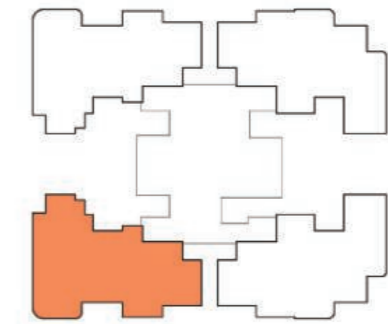
UNIT NO-4
TYPE-20(3B - 2T)



TOWER-5 (SQ.FT.)				
UNIT TYPE	TYPE	UNIT NO	SALE AREA	CARPET AREA
17	3B - 2T	1	1691	1079
18	3B - 2T	2	1691	1079
19	3B - 2T	3	1622	1081
20	3B - 2T	4	1622	1081

TYPICAL FLOOR PLAN
PHASE 1 TOWER - 05





CLUSTER PLAN
TOWER - 05

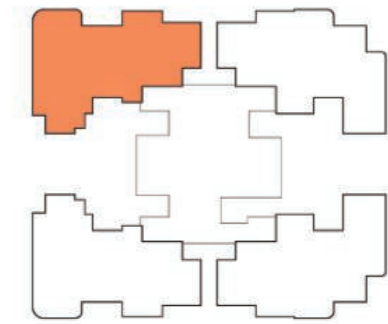


KEYPLAN
PART MASTER PLAN

**3 BED 2T UNIT
UNIT - 1**

SALE AREA = 1691 sqft
CARPET AREA = 1079 sqft

**3 BED 2T - UNIT TYPE-17
PHASE 1 TOWER - 05**



CLUSTER PLAN
TOWER - 05



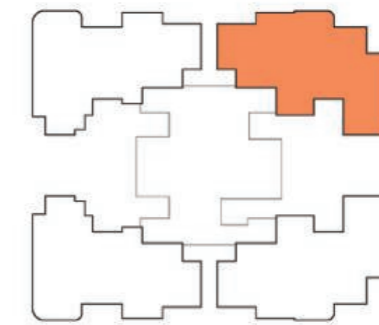
KEYPLAN
PART MASTER PLAN



3 BED 2T UNIT
UNIT - 2

SALE AREA = 1691 sqft
CARPET AREA = 1079 sqft

3 BED 2T - UNIT TYPE-18
PHASE 1 TOWER - 05



CLUSTER PLAN
TOWER - 05



KEYPLAN
PART MASTER PLAN

3 BED 2T UNIT
UNIT - 3

SALE AREA = 1622 sqft
CARPET AREA = 1081 sqft

3 BED 2T - UNIT TYPE-19
PHASE 1 TOWER - 05



CLUSTER PLAN
TOWER - 05



KEYPLAN
PART MASTER PLAN

3 BED 2T UNIT
UNIT - 4

SALE AREA = 1622 sqft
CARPET AREA = 1081 sqft

3 BED 2T - UNIT TYPE-20
PHASE 1 TOWER - 05

TOWER - 06



UNIT NO-2
TYPE-23(2B - 2T)

UNIT NO-3
TYPE-24(2B - 2T)



UNIT NO-1
TYPE-21(2.5B - 2T)

UNIT NO-4
TYPE-22(2.5B - 2T)

TOWER-6 (SQ.FT.)					
UNIT TYPE	TYPE		UNIT NO	SALE AREA	CARPET AREA
	TYPOLOGY				
21	2.5B - 2T		1	1418	938
23	2B - 2T		2	1243	796
24	2B - 2T		3	1323	807
22	2.5B - 2T		4	1521	950

TYPICAL FLOOR PLAN
PHASE 1 TOWER - 06





CLUSTER PLAN
TOWER - 06

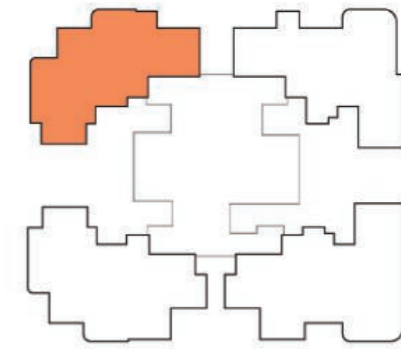


KEYPLAN
PART MASTER PLAN

**2.5 BED 2T UNIT
UNIT- 1**

SALE AREA = 1418 sqft
CARPET AREA = 938 sqft

**2.5 BED 2T - UNIT TYPE- 21
PHASE 1 TOWER - 06**



CLUSTER PLAN
TOWER - 06

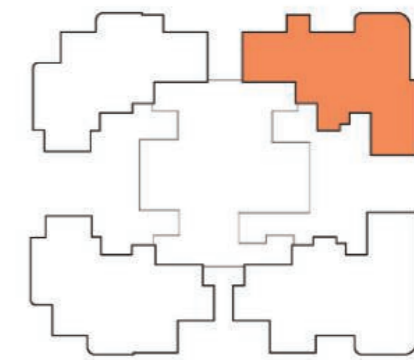


KEYPLAN
PART MASTER PLAN

2 BED 2T UNIT
UNIT- 2

SALE AREA = 1243 sqft
CARPET AREA = 796 sqft

2 BED 2T - UNIT TYPE-23
PHASE 1 TOWER - 06



CLUSTER PLAN
TOWER - 06



KEYPLAN
PART MASTER PLAN

2 BED 2T UNIT
UNIT- 3

SALE AREA = 1323 sqft
CARPET AREA = 807 sqft

2 BED 2T - UNIT TYPE-24
PHASE 1 TOWER - 06





CLUSTER PLAN
TOWER - 06



KEYPLAN
PART MASTER PLAN

2.5 BED 2T UNIT
UNIT- 4

SALE AREA = 1521 sqft
CARPET AREA = 950 sqft

2.5 BED 2T - UNIT TYPE-22
PHASE 1 TOWER - 06





The information depicted herein viz., master plans, floor plans, furniture layout, fittings, illustrations, specifications, designs, dimensions, rendered views, colours, amenities and facilities etc., are subject to change without notifications as may be required by the relevant authorities or the Developer's architect, and cannot form part of an offer or contract. Whilst every care is taken in providing this information, the Developer cannot be held liable for variations. All illustrations and pictures are artist's impressions only. The information is subject to variations, additions, deletions, substitutions and modifications as may be recommended by the company's architect and/or the relevant approving authorities. The Developer is wholly exempt from any liability on account of any claim in this regard. (1 square metre = 10.764 square feet). E & OE. All dimensions and calculations are done in metric system (M/Sq.m), and imperial system (Ft/Sq.ft) shown is for reference only. All dimensions indicated in the drawing are from unfinished surfaces, excluding plaster thickness and tile thickness. For ceiling clear height of all rooms refer sales agreement.

RERA: PRM/KA/RERA/1251/308/PR/100125/007377

Images are indicative. For representation only.

 702 603 4444

 CREDAI
BENGALURU

In association with
 BADAM
VENTURES Realty



District 25:

Chandapura Dommasandra Road, Dommasandra, Bengaluru - 562 125

Head Office:

2nd Floor, PR Business Centre, Above Croma, Outer Ring Road,
Kadubisanahalli, Marathahalli Post, Bengaluru - 560 103